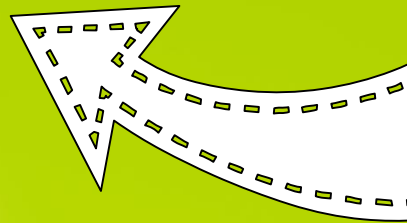


Energy

Web quest



By: Jessica Hursh at The Teacher Talk

Energy Webquest!

If you're trying to find the perfect way to integrate technology into your classroom, then a web quest is the way to go! It's so easy to implement! Simply, give students the web quest packet, a source of technology and let them research their little hearts away!

This web quest can be completed on a desktop computer, laptop or iPad.



Energy Webquest

Name: _____

- a) Visit the website: eia.gov/kids
- b) Click on, "What is Energy?" Then, click, "Energy Basics." Read the information on this page.
- c) Answer the questions in the chart below.

What are the five main renewable energy sources?	What are two of the main non-renewable energy sources?
--	--

- d) Read the last three paragraphs on this page. List 3-5 facts that you've learned about how we use energy sources.

- e) Click on the, "Energy for Kids," words at the top left. Click on, "Energy Sources." Click on "Nonrenewable."
- f) List the four major nonrenewable energy sources. Then, click on the names and write 2-3 facts about each energy source.

Energy Source 1	Energy Source 2	Energy Source 3	Energy Source 4

Energy Webquest

Name: _____

g) Go back to, "Energy Sources." Click on, "Renewable."

h) What is renewable energy?

i) What is biomass?

j) Why don't we use more renewable energy?

k) Click on, "Using and Saving Energy," at the top left. Click on each heading and read more about using and saving energy. Write a summary of your learning in 3-5 sentences.

l) Click on, "Energy and the Environment." Then, click on, "Oil and the Petroleum Products," located in the chart. Read the information under this heading.

Energy Webquest

Name: _____

j) What negative impacts does oil byproducts have on the environment?
Write 3-5.

k) Click the back button. Then, click, "Solar," which is also located in the chart under, "Renewable Sources of Energy." Read the information.

l) Circle true or false.

True or False: Solar energy converts sunlight into energy.

True or False: There are toxic materials and chemicals in the materials used to create solar energy.

True or False: It is okay for birds and insects to fly into a beam of sunlight created by a solar power tower. It helps give them more energy.

m) How can large solar power plants affect the environment?

n) Click on the back button. Scroll down and click, "Recycling."

o) How does recycling solve energy in the production of new products?

Energy Webquest

Name: _____

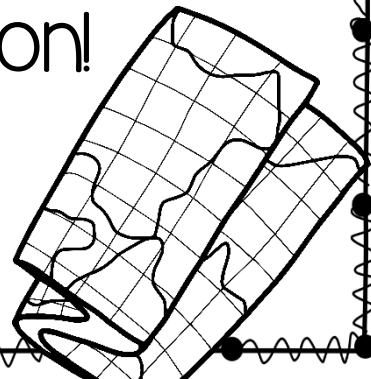
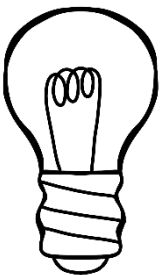
j) Click on any tab that interests you. State which tab you clicked on, and summarize your new learning in 4-6 sentences below.

Are you finished?

Click on, "Games and Activities." Then, click on "Riddles, Slang or Puzzles."

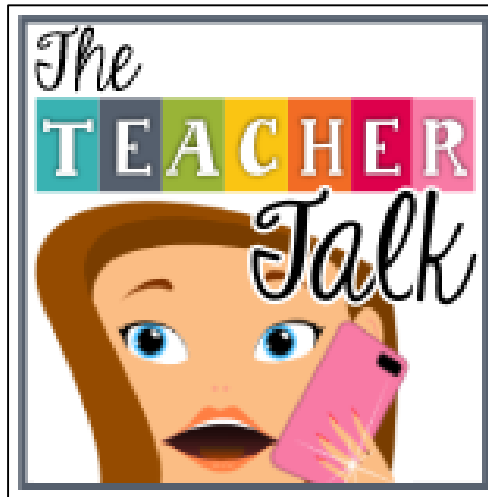
Have fun!!

Don't forget to use the website to find more information!



THANK YOU!

Check out my blog for freebies!



I really hope this product is all that you hoped it would be. Please leave positive, thoughtful feedback! If you are not fully satisfied with your purchase please

e-mail me at:

jessicaearlyteacher@gmail.com.

Thank you! 😊

Credits

